

## **Delegated Decision**

**27 November 2024**

**Temporary Traffic Regulation Order**

**Ordinary Decision/Key Decision No.**



---

## **Report of NEIGHBOURHOODS & CLIMATE CHANGE**

**Paul Anderson – Strategic Highways Manager, Technical Services**

### **Electoral division(s) affected:**

Belmont, Elvet & Gilesgate, North Lodge, Coxhoe Wards: Cllrs C Fletcher, L Mavin, E Mavin, D Freeman, R Ormerod, C Martin, J Blakey, G Hutchinson, V Anderson

### **Purpose of the Report**

To consider a request for temporary traffic regulation by Order on 6 January 2025 for the purpose of carriageway repair works at A690 / Carrville Interchange.

### **Recommendation**

It is recommended that the Council exercises its powers under the Road Traffic Regulation Act 1984 to effect a Temporary Traffic Regulation Order to facilitate the proposed works

### **Background**

Works are proposed by National Highways to undertake carriageway repair works within the confines of the highway.

### **Options**

Other traffic management arrangements have been considered and the most appropriate method is for temporary road closure for approx. 4 nights

### **Recommendation**

The recommendation is approved and that following, consultations with the Chief of Police, arrangements be made to progress the advertising of Public Notices and sealing of an Order.

---

**Contact:** Steven Galloway

Tel: 03000 267095

---

---

## **Appendix 1: Implications**

---

### **Legal Implications**

TTRO checked, prepared and advertised via Legal Services

### **Finance**

Costs to be charged to the scheme/applicant.

### **Consultation**

Chief of Police, Local Members, Public Transport Providers (via the Public Transport Team)

### **Equality and Diversity / Public Sector Equality Duty**

N/A

### **Human Rights**

No impact

### **Crime and Disorder**

N/A

### **Climate Change**

N/A

### **Staffing**

Network Management Team

### **Accommodation**

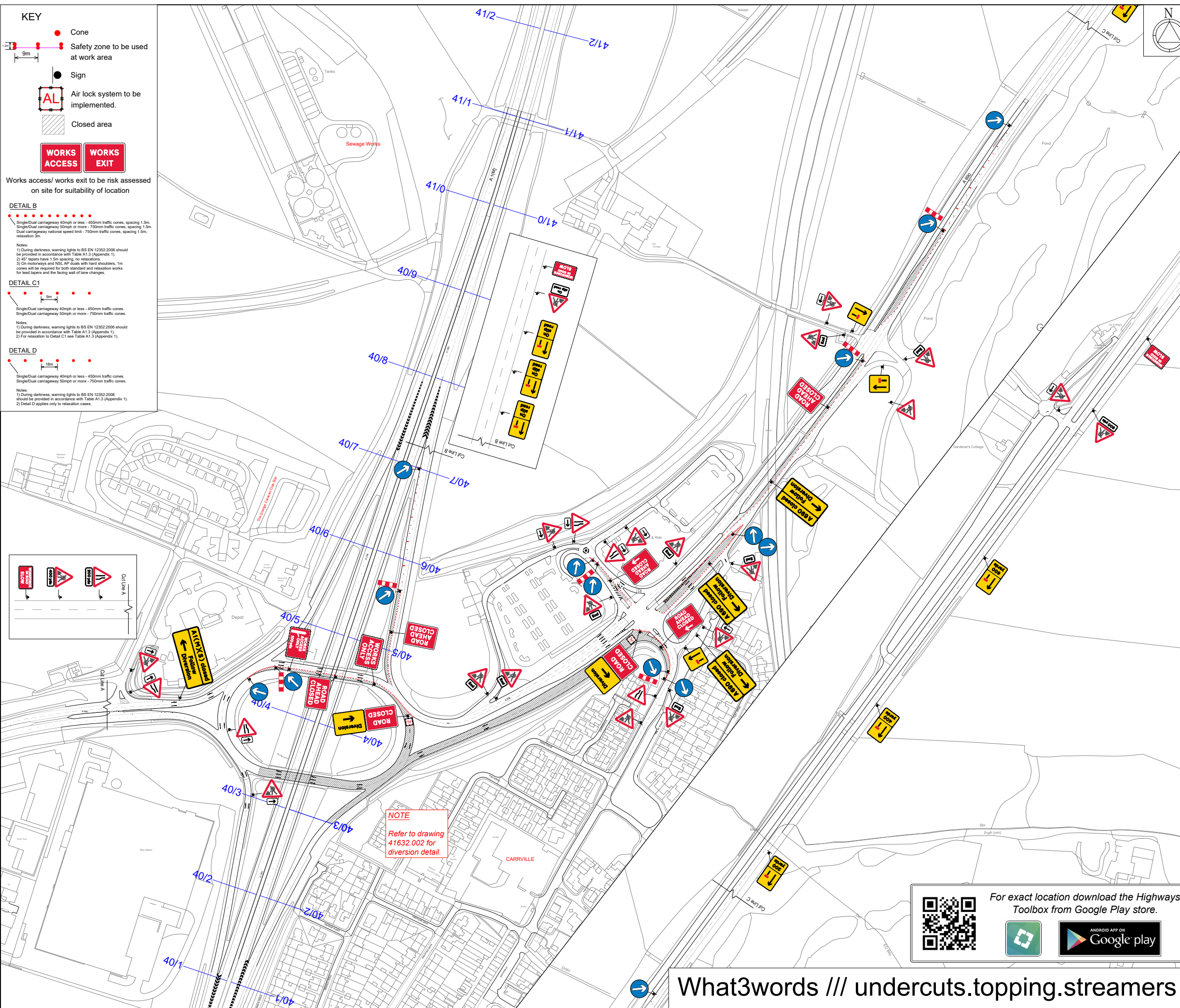
N/A

### **Risk**

N/A

### **Procurement**

Advertising in a public newspaper with costs recharged to the scheme/applicant



**KEY**

- Cone
- Safety zone to be used at work area
- Sign
- Air lock system to be implemented.
- Closed area
- WORKS ACCESS
- WORKS EXIT

Works access/ works exit to be risk assessed on site for suitability of location

**DETAIL B**

Single/Dual carriageway 40mph or less - 450mm traffic cones, spacing 1.5m.  
 Single/Dual carriageway 50mph or more - 750mm traffic cones, spacing 1.5m.  
 Dual carriageway national speed limit - 750mm traffic cones, spacing 1.5m, relaxation 5m.

**Notes:**

- During darkness, warning lights to BS EN 12352:2006 should be provided in accordance with Table A1.3 (Appendix 1).
- 45° tapered cones have 1.5m spacing, no relaxations.
- On motorways and NSL AP duals with hard shoulders, 1m cones will be required for both standard and relaxation works for lead tapers and the facing wall of lane changes.

**DETAIL C1**

Single/Dual carriageway 40mph or less - 450mm traffic cones.  
 Single/Dual carriageway 50mph or more - 750mm traffic cones.

**Notes:**

- During darkness, warning lights to BS EN 12352:2006 should be provided in accordance with Table A1.3 (Appendix 1).
- For relaxation to Detail C1 see Table A1.3 (Appendix 1).

**DETAIL D**

Single/Dual carriageway 40mph or less - 450mm traffic cones.  
 Single/Dual carriageway 50mph or more - 750mm traffic cones.

**Notes:**

- During darkness, warning lights to BS EN 12352:2006 should be provided in accordance with Table A1.3 (Appendix 1).
- Detail D applies only to relaxation cases.

**KIT LIST**

Qty: 1	Ref: 101	Sign: Temporary Information	Sign: A163
Qty: 2	Ref: 102	Sign: Temporary Information	Sign: A163
Qty: 1	Ref: 103	Sign: Road Closed	Sign: A163
Qty: 1	Ref: 104	Sign: Road Closed	Sign: A163
Qty: 1	Ref: 105	Sign: Road Closed	Sign: A163
Qty: 1	Ref: 106	Sign: Road Closed	Sign: A163
Qty: 1	Ref: 107	Sign: Road Closed	Sign: A163
Qty: 1	Ref: 108	Sign: Road Closed	Sign: A163
Qty: 1	Ref: 109	Sign: Road Closed	Sign: A163
Qty: 1	Ref: 110	Sign: Road Closed	Sign: A163
Qty: 1	Ref: 111	Sign: Road Closed	Sign: A163
Qty: 1	Ref: 112	Sign: Road Closed	Sign: A163
Qty: 1	Ref: 113	Sign: Road Closed	Sign: A163
Qty: 1	Ref: 114	Sign: Road Closed	Sign: A163
Qty: 1	Ref: 115	Sign: Road Closed	Sign: A163
Qty: 1	Ref: 116	Sign: Road Closed	Sign: A163
Qty: 1	Ref: 117	Sign: Road Closed	Sign: A163
Qty: 1	Ref: 118	Sign: Road Closed	Sign: A163
Qty: 1	Ref: 119	Sign: Road Closed	Sign: A163
Qty: 1	Ref: 120	Sign: Road Closed	Sign: A163
Qty: 1	Ref: 121	Sign: Road Closed	Sign: A163
Qty: 1	Ref: 122	Sign: Road Closed	Sign: A163
Qty: 1	Ref: 123	Sign: Road Closed	Sign: A163
Qty: 1	Ref: 124	Sign: Road Closed	Sign: A163
Qty: 1	Ref: 125	Sign: Road Closed	Sign: A163
Qty: 1	Ref: 126	Sign: Road Closed	Sign: A163
Qty: 1	Ref: 127	Sign: Road Closed	Sign: A163
Qty: 1	Ref: 128	Sign: Road Closed	Sign: A163
Qty: 1	Ref: 129	Sign: Road Closed	Sign: A163
Qty: 1	Ref: 130	Sign: Road Closed	Sign: A163
Qty: 1	Ref: 131	Sign: Road Closed	Sign: A163
Qty: 1	Ref: 132	Sign: Road Closed	Sign: A163
Qty: 1	Ref: 133	Sign: Road Closed	Sign: A163
Qty: 1	Ref: 134	Sign: Road Closed	Sign: A163
Qty: 1	Ref: 135	Sign: Road Closed	Sign: A163
Qty: 1	Ref: 136	Sign: Road Closed	Sign: A163
Qty: 1	Ref: 137	Sign: Road Closed	Sign: A163
Qty: 1	Ref: 138	Sign: Road Closed	Sign: A163
Qty: 1	Ref: 139	Sign: Road Closed	Sign: A163
Qty: 1	Ref: 140	Sign: Road Closed	Sign: A163
Qty: 1	Ref: 141	Sign: Road Closed	Sign: A163
Qty: 1	Ref: 142	Sign: Road Closed	Sign: A163
Qty: 1	Ref: 143	Sign: Road Closed	Sign: A163
Qty: 1	Ref: 144	Sign: Road Closed	Sign: A163
Qty: 1	Ref: 145	Sign: Road Closed	Sign: A163
Qty: 1	Ref: 146	Sign: Road Closed	Sign: A163
Qty: 1	Ref: 147	Sign: Road Closed	Sign: A163
Qty: 1	Ref: 148	Sign: Road Closed	Sign: A163
Qty: 1	Ref: 149	Sign: Road Closed	Sign: A163
Qty: 1	Ref: 150	Sign: Road Closed	Sign: A163
Qty: 1	Ref: 151	Sign: Road Closed	Sign: A163
Qty: 1	Ref: 152	Sign: Road Closed	Sign: A163
Qty: 1	Ref: 153	Sign: Road Closed	Sign: A163
Qty: 1	Ref: 154	Sign: Road Closed	Sign: A163
Qty: 1	Ref: 155	Sign: Road Closed	Sign: A163
Qty: 1	Ref: 156	Sign: Road Closed	Sign: A163
Qty: 1	Ref: 157	Sign: Road Closed	Sign: A163
Qty: 1	Ref: 158	Sign: Road Closed	Sign: A163
Qty: 1	Ref: 159	Sign: Road Closed	Sign: A163
Qty: 1	Ref: 160	Sign: Road Closed	Sign: A163
Qty: 1	Ref: 161	Sign: Road Closed	Sign: A163
Qty: 1	Ref: 162	Sign: Road Closed	Sign: A163
Qty: 1	Ref: 163	Sign: Road Closed	Sign: A163
Qty: 1	Ref: 164	Sign: Road Closed	Sign: A163
Qty: 1	Ref: 165	Sign: Road Closed	Sign: A163
Qty: 1	Ref: 166	Sign: Road Closed	Sign: A163
Qty: 1	Ref: 167	Sign: Road Closed	Sign: A163
Qty: 1	Ref: 168	Sign: Road Closed	Sign: A163
Qty: 1	Ref: 169	Sign: Road Closed	Sign: A163
Qty: 1	Ref: 170	Sign: Road Closed	Sign: A163
Qty: 1	Ref: 171	Sign: Road Closed	Sign: A163
Qty: 1	Ref: 172	Sign: Road Closed	Sign: A163
Qty: 1	Ref: 173	Sign: Road Closed	Sign: A163
Qty: 1	Ref: 174	Sign: Road Closed	Sign: A163
Qty: 1	Ref: 175	Sign: Road Closed	Sign: A163
Qty: 1	Ref: 176	Sign: Road Closed	Sign: A163
Qty: 1	Ref: 177	Sign: Road Closed	Sign: A163
Qty: 1	Ref: 178	Sign: Road Closed	Sign: A163
Qty: 1	Ref: 179	Sign: Road Closed	Sign: A163
Qty: 1	Ref: 180	Sign: Road Closed	Sign: A163
Qty: 1	Ref: 181	Sign: Road Closed	Sign: A163
Qty: 1	Ref: 182	Sign: Road Closed	Sign: A163
Qty: 1	Ref: 183	Sign: Road Closed	Sign: A163
Qty: 1	Ref: 184	Sign: Road Closed	Sign: A163
Qty: 1	Ref: 185	Sign: Road Closed	Sign: A163
Qty: 1	Ref: 186	Sign: Road Closed	Sign: A163
Qty: 1	Ref: 187	Sign: Road Closed	Sign: A163
Qty: 1	Ref: 188	Sign: Road Closed	Sign: A163
Qty: 1	Ref: 189	Sign: Road Closed	Sign: A163
Qty: 1	Ref: 190	Sign: Road Closed	Sign: A163
Qty: 1	Ref: 191	Sign: Road Closed	Sign: A163
Qty: 1	Ref: 192	Sign: Road Closed	Sign: A163
Qty: 1	Ref: 193	Sign: Road Closed	Sign: A163
Qty: 1	Ref: 194	Sign: Road Closed	Sign: A163
Qty: 1	Ref: 195	Sign: Road Closed	Sign: A163
Qty: 1	Ref: 196	Sign: Road Closed	Sign: A163
Qty: 1	Ref: 197	Sign: Road Closed	Sign: A163
Qty: 1	Ref: 198	Sign: Road Closed	Sign: A163
Qty: 1	Ref: 199	Sign: Road Closed	Sign: A163
Qty: 1	Ref: 200	Sign: Road Closed	Sign: A163

Rev	Description	By	Chkd	Date
-	-	-	-	-

Client

Project  
**A1(M) Jct 62 Interchange**  
 Grid Ref: 430427 , 544414

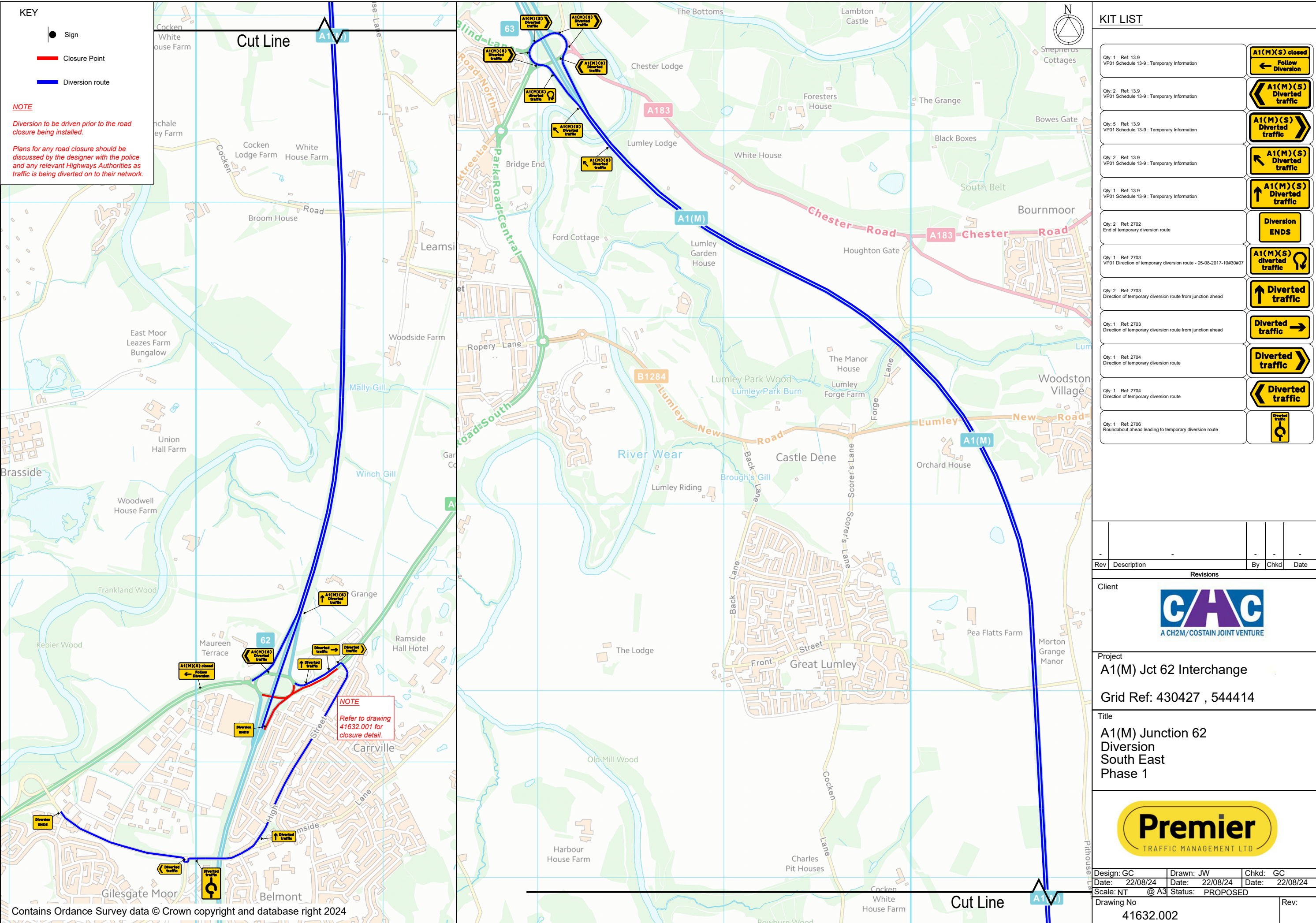
Title  
**A1(M) Junction 62  
 Total closure  
 South East  
 Phase 1**

Design: GC	Drawn: JW	Chkd: GC
Date: 22/08/24	Date: 22/08/24	Date: 22/08/24
Scale: NT @ A3	Status: PROPOSED	
Drawing No		Rev:
41632.001		

For exact location download the Highways Toolbox from Google Play store.

What3words /// undercuts.topping.streamers





Rev	Description	By	Chkd	Date
-	-	-	-	-

Revisions

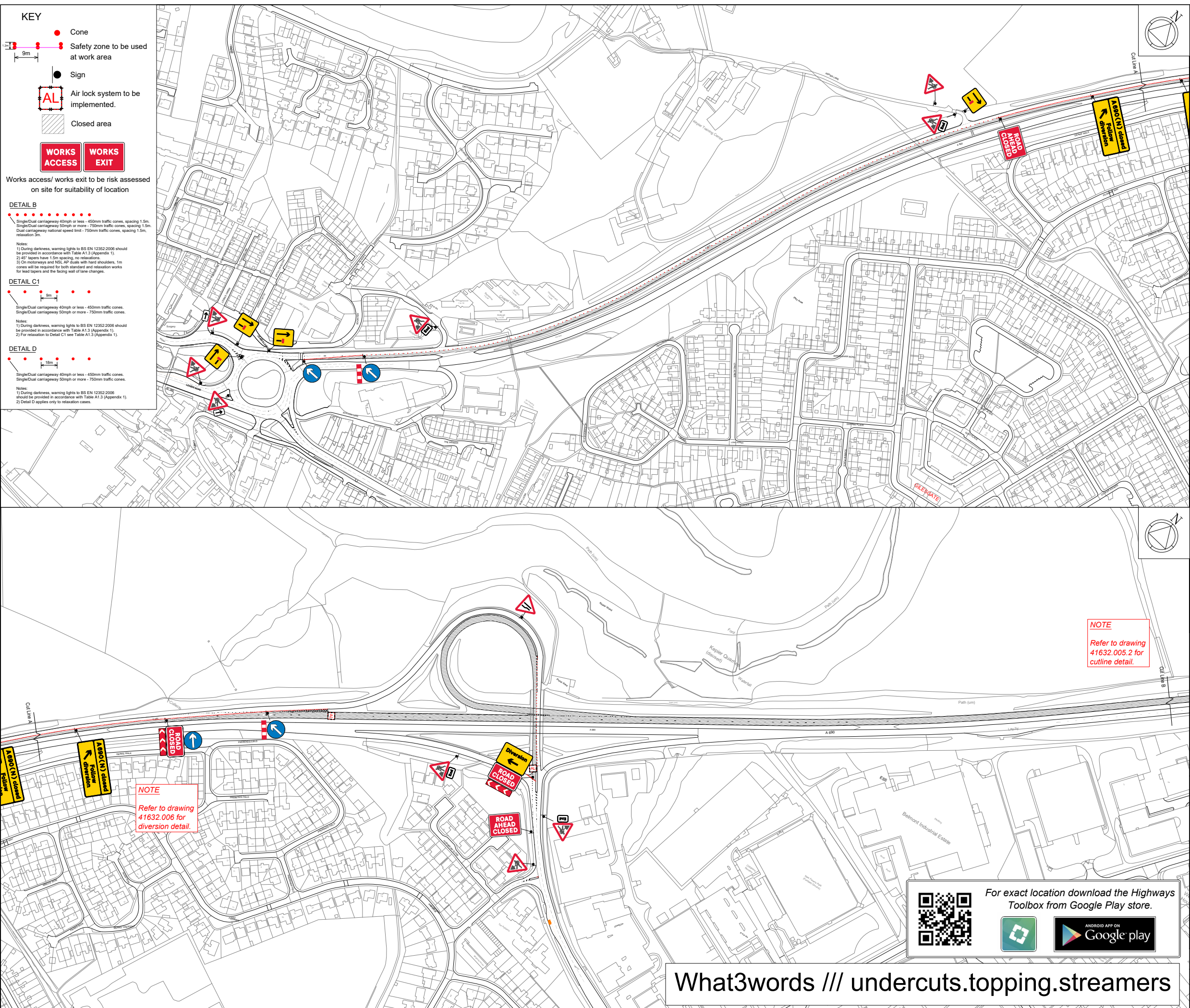
Client

Project  
**A1(M) Jct 62 Interchange**  
 Grid Ref: 430427 , 544414

Title  
**A1(M) Junction 62  
 Diversion  
 South East  
 Phase 1**

Design: GC	Drawn: JW	Chkd: GC
Date: 22/08/24	Date: 22/08/24	Date: 22/08/24
Scale: NT @ A3	Status: PROPOSED	
Drawing No 41632.002	Rev:	





**KEY**

- Cone
- Safety zone to be used at work area
- Sign
- AL Air lock system to be implemented.
- ▨ Closed area
- WORKS ACCESS
- WORKS EXIT

Works access/ works exit to be risk assessed on site for suitability of location

**DETAIL B**

- Single/Dual carriageway 40mph or less - 450mm traffic cones, spacing 1.5m.
- Single/Dual carriageway 50mph or more - 750mm traffic cones, spacing 1.5m.
- Dual carriageway national speed limit - 750mm traffic cones, spacing 1.5m, relaxation 5m.

**Notes:**

- 1) During darkness, warning lights to BS EN 12352:2006 should be provided in accordance with Table A1.3 (Appendix 1).
- 2) 45° tapered cones, no relaxations.
- 3) On motorways and NSL AP ducts with hard shoulders, 1m cones will be required for both standard and relaxation works for lead tapers and the facing wall of lane changes.

**DETAIL C1**

- Single/Dual carriageway 40mph or less - 450mm traffic cones.
- Single/Dual carriageway 50mph or more - 750mm traffic cones.

**Notes:**

- 1) During darkness, warning lights to BS EN 12352:2006 should be provided in accordance with Table A1.3 (Appendix 1).
- 2) For relaxation to Detail C1 see Table A1.3 (Appendix 1).

**DETAIL D**

- Single/Dual carriageway 40mph or less - 450mm traffic cones.
- Single/Dual carriageway 50mph or more - 750mm traffic cones.

**Notes:**

- 1) During darkness, warning lights to BS EN 12352:2006 should be provided in accordance with Table A1.3 (Appendix 1).
- 2) Detail D applies only to relaxation cases.

**KIT LIST**

Qty: 2 Ref: 115 VPI Schedule 15-9: Temporary Information	
Qty: 2 Ref: 113 VPI Schedule 15-9: Temporary Information	
Qty: 1 Ref: 13.9.3010 ROAD AHEAD CLOSED RIGHT	
Qty: 2 Ref: 2702 Start of temporary diversion route	
Qty: 3 Ref: 517 Road narrows on one side only ahead - right	
Qty: 1 Ref: 572 Distance ahead to hazard	
Qty: 1 Ref: 572 Distance ahead to hazard	
Qty: 3 Ref: 573 Direction to hazard left	
Qty: 3 Ref: 573 Direction to hazard right	
Qty: 1 Ref: 606 Turn left	
Qty: 7 Ref: 610 Keep left	
Qty: 2 Ref: 645 End panel	
Qty: 15 Ref: 7001 Road works ahead	
Qty: 1 Ref: 7001.1 Nature of road works - On Slip Road	
Qty: 2 Ref: 7001.3 Workforce in road ahead	
Qty: 4 Ref: 7010-AP-13.9 Nature of temporary hazard ahead - Road Ahead Closed	
Qty: 2 Ref: 7010-AP-13.9 Nature of temporary hazard ahead - Road Closed	
Qty: 2 Ref: 7010.1 Nature of temporary hazard ahead - Road Closed	
Qty: 2 Ref: 7104 Heavy diversion left of route at road works	
Qty: 4 Ref: 7105 Lane closure barrier	
Qty: 4 Ref: 7202.1 Temporary lane availability	
Qty: 3 Ref: 7202.1 Temporary lane availability	
Qty: 1 Ref: 7201 Works access (vertical)	
Qty: 1 Ref: 7306 Route for works traffic ahead access only direction right reversible	

Rev	Description	By	Chkd	Date
-	-	-	-	-

Revisions

Client

Project  
A1(M) Jct 62 Interchange  
Grid Ref: 430427 , 544414

Title  
A1(M) Junction 62  
Total closure  
North West  
Phase 3

Design: GC	Drawn: JW	Chkd: GC
Date: 23/08/24	Date: 23/08/24	Date: 23/08/24
Scale: NT	@ A3	Status: PROPOSED
Drawing No	Rev:	
41632.005.1		

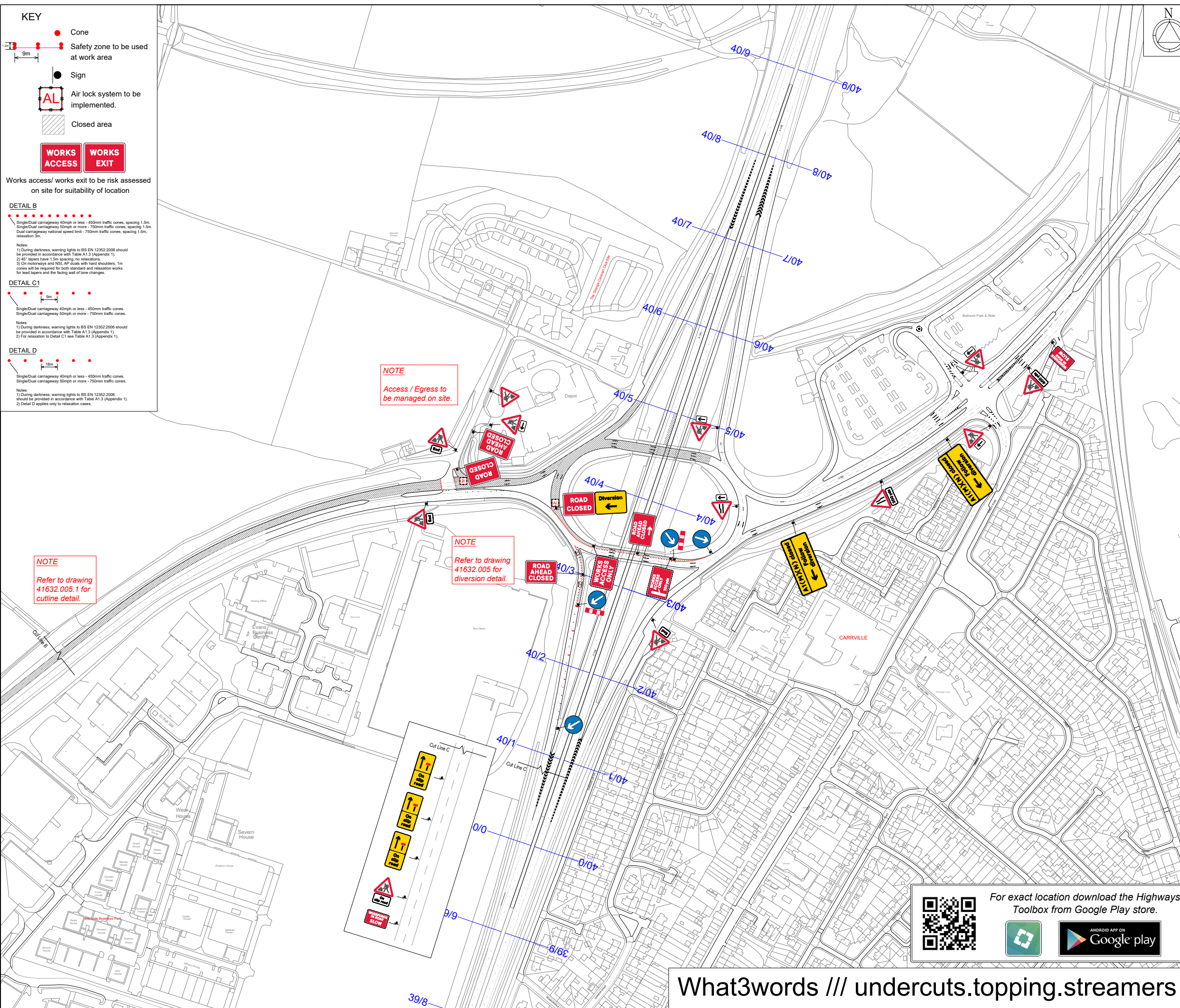
**NOTE**  
Refer to drawing 41632.005.2 for cutline detail.

**NOTE**  
Refer to drawing 41632.006 for diversion detail.

For exact location download the Highways Toolbox from Google Play store.

What3words /// undercuts.topping.streamers





**KIT LIST**

Qty: 2 Ref: 113 VPI Schedule 13-9: Temporary Information	
Qty: 1 Ref: 113 VPI Schedule 13-9: Temporary Information	
Qty: 1 Ref: 13.9.3010 ROAD AHEAD CLOSED RIGHT	
Qty: 2 Ref: 2702 Start of temporary diversion route	
Qty: 3 Ref: 517 Road narrows on one side only ahead - right	
Qty: 1 Ref: 572 Distance ahead to hazard	
Qty: 1 Ref: 572 Distance ahead to hazard	
Qty: 3 Ref: 573 Direction to hazard left	
Qty: 3 Ref: 573 Direction to hazard right	
Qty: 1 Ref: 606 Turn left	
Qty: 7 Ref: 610 Keep left	
Qty: 2 Ref: 645 End point	
Qty: 10 Ref: 7001 Road works ahead	
Qty: 1 Ref: 7001.1 Nature of road works - On Slip Road	
Qty: 2 Ref: 7001.3 Workforce in road ahead	
Qty: 4 Ref: 7010-FP-13-9 Nature of temporary hazard ahead - Road Ahead Closed	
Qty: 2 Ref: 7010-FP-13-9 Nature of temporary hazard ahead - Road Closed	
Qty: 2 Ref: 7010.1 Nature of temporary hazard ahead - Road Closed	
Qty: 2 Ref: 7104 Heavy diversion left of route at road works	
Qty: 4 Ref: 7105 Lane closure barrier	
Qty: 4 Ref: 7202.1 Temporary lane availability	
Qty: 3 Ref: 7202.1 Temporary lane availability	
Qty: 1 Ref: 7201 Works access (vertical)	
Qty: 1 Ref: 7300 Route for works traffic ahead access only direction right reversible	

Rev	Description	By	Chkd	Date
-	-	-	-	-

Client

Project  
A1(M) Jct 62 Interchange  
Grid Ref: 430427 , 544414

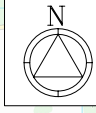
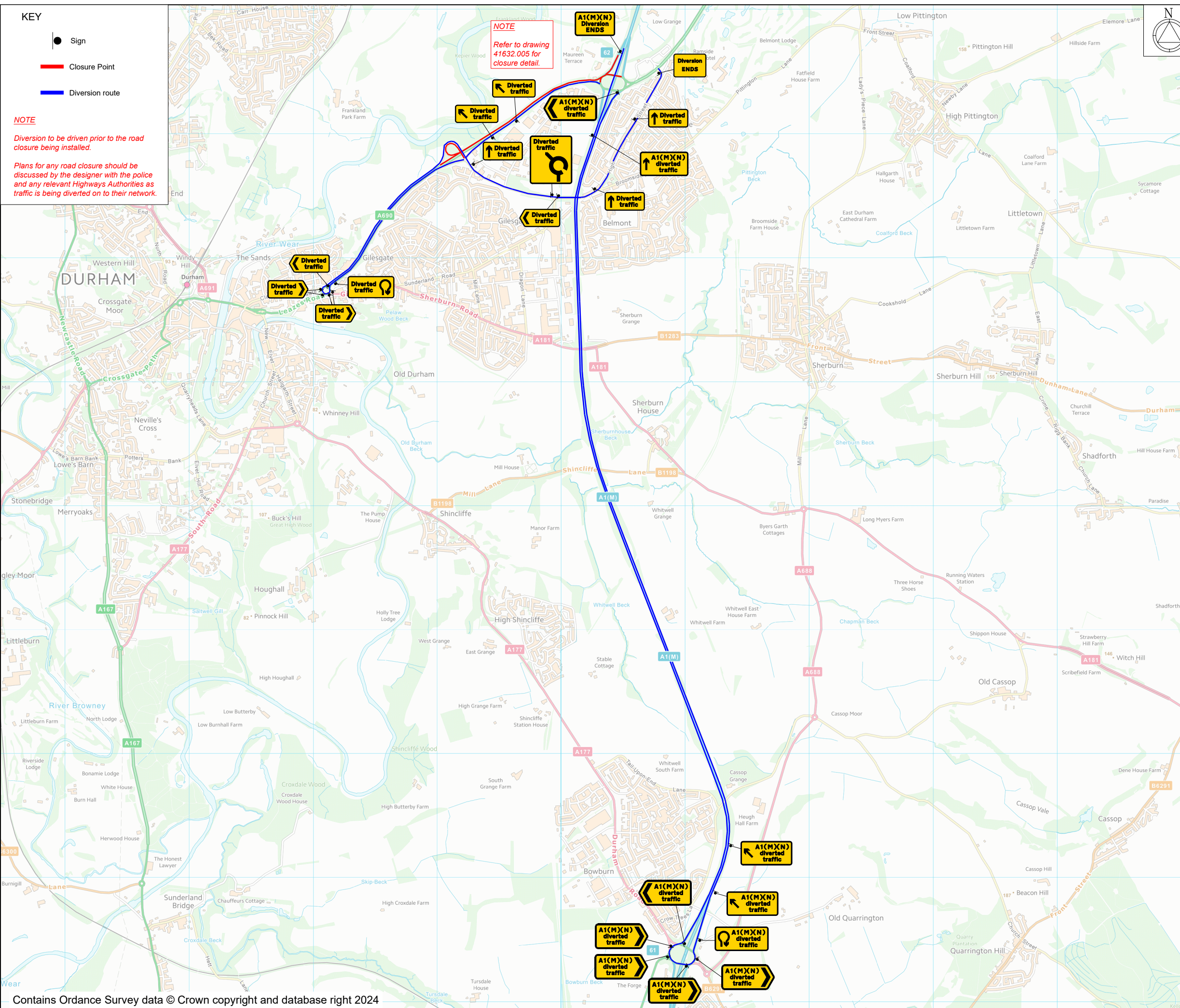
Title  
A1(M) Junction 62  
Total closure  
North West  
Phase 3

Design: GC	Drawn: JW	Chkd: GC
Date: 23/08/24	Date: 23/08/24	Date: 23/08/24
Scale: NT @ A3	Status: PROPOSED	
Drawing No 41632.005.2		Rev:

For exact location download the Highways Toolbox from Google Play store.

What3words /// undercuts.topping.streamers





**KIT LIST**

Qty: 2 Ref: 13.9 VP01 Schedule 13-9: Temporary Information	
Qty: 2 Ref: 13.9 VP01 Schedule 13-9: Temporary Information	
Qty: 1 Ref: 13.9 VP01 Schedule 13-9: Temporary Information	
Qty: 4 Ref: 13.9 VP01 Schedule 13-9: Temporary Information	
Qty: 1 Ref: 13.9 VP01 Schedule 13-9: Temporary Information	
Qty: 1 Ref: 13.9 VP01 Schedule 13-9: Temporary Information	
Qty: 1 Ref: 2702 End of temporary diversion route	
Qty: 1 Ref: 2703 Direction of temporary diversion route u-turn at roundabout ahead	
Qty: 3 Ref: 2703 Direction of temporary diversion route from junction ahead	
Qty: 2 Ref: 2703 Direction of temporary diversion route from junction ahead	
Qty: 4 Ref: 2704 Direction of temporary diversion route	
Qty: 2 Ref: 2704 Direction of temporary diversion route	
Qty: 1 Ref: 2706 Roundabout ahead leading to temporary diversion route	

Rev	Description	By	Chkd	Date
-	-	-	-	-

Revisions

Client

Project  
**A1(M) Jct 62 Interchange**  
 Grid Ref: 430427 , 544414

Title  
**A1(M) Junction 62  
 Diversion  
 North West  
 Phase 3**

Design: GC	Drawn: JW	Chkd: GC
Date: 23/08/24	Date: 23/08/24	Date: 23/08/24
Scale: NT @ A3	Status: PROPOSED	
Drawing No	Rev:	
41632.006		